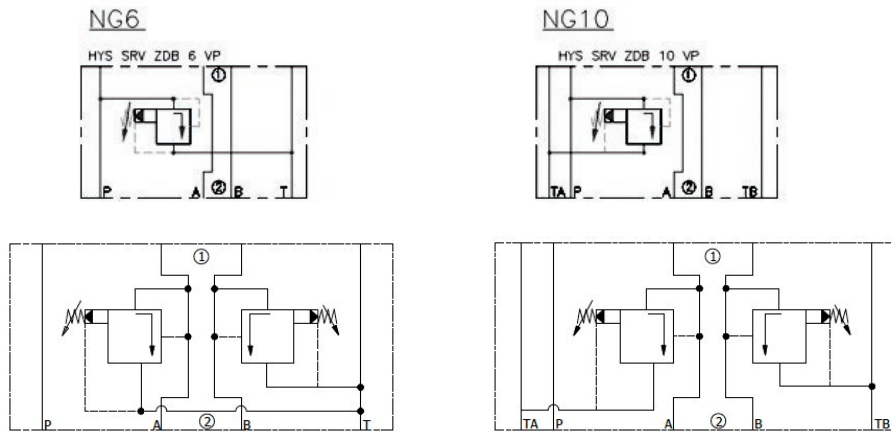


# 19 intermediate valves Cetop mounted

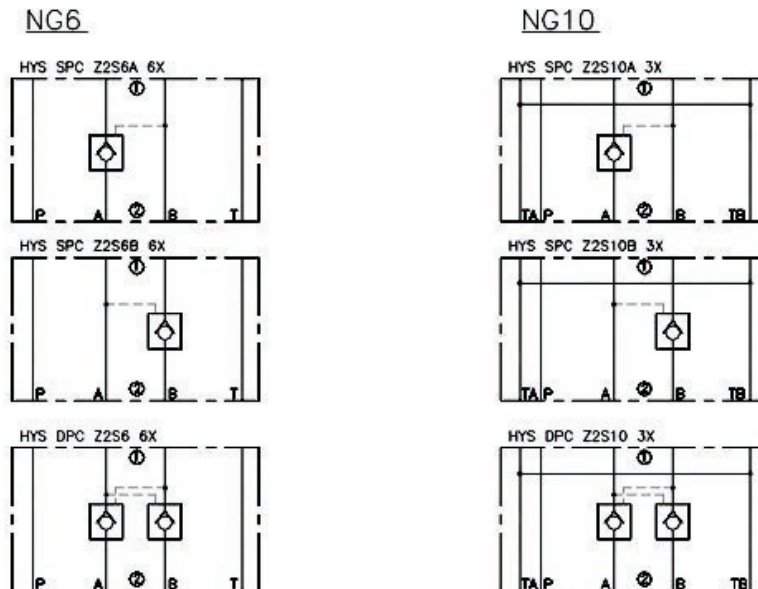
Relief Valves	Sec19:2
Pilot Check Valves	Sec19:2
Throttle Check Valves	Sec19:3

## Relief Valves



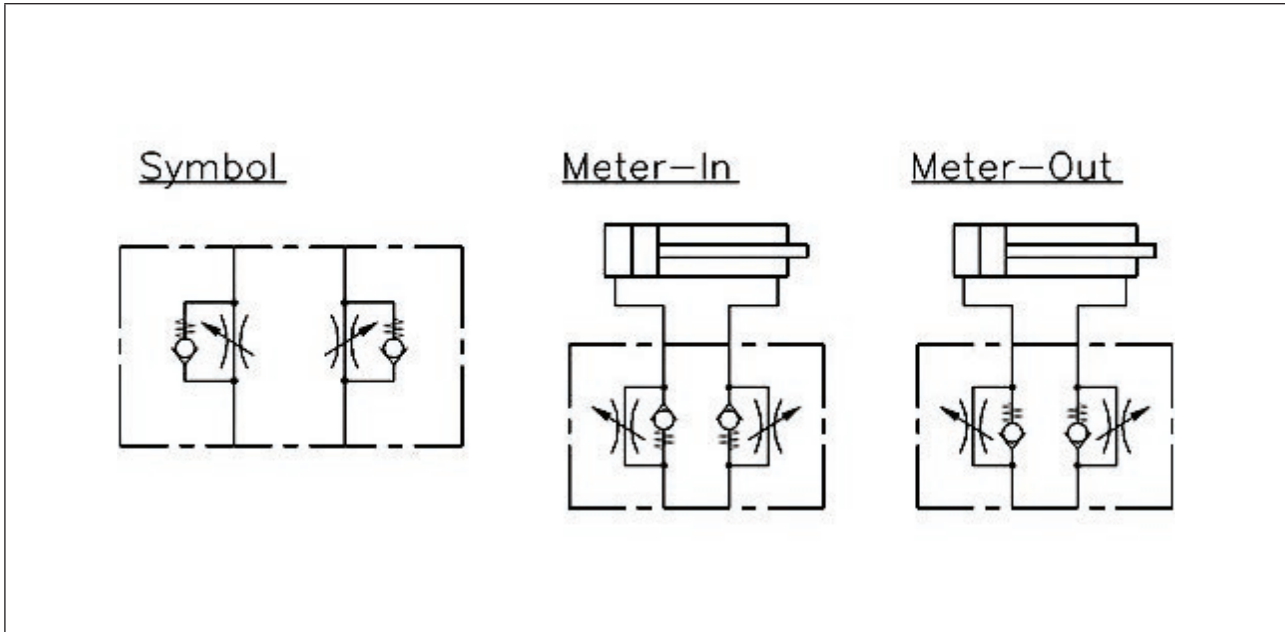
Part number	Description	Retail price R
HYS SRV ZDB6VP	NG6 Single relief valve ON P	
HYS DRV Z2DB6VD	NG6 Double relief valve A+B	
HYS SRV ZDB10VP	NG10 Single relief valve ON P	
HYS DRV Z2DB10VD	NG10 Double relief valve A+B	

## Pilot Check Valves



Part number	Description	Retail price R
HYS SPCZ2S6A	NG6 Single pilot check valve A line	
HYS SPCZ2S6B	NG6 Single pilot check valve B line	
HYS DPCZ2S61	NG6 Dual pilot check valve	
HYS SPCZ2S10A	NG10 Single pilot check valve A line	
HYS SPCZ2S10B	NG10 Single pilot check valve B line	
HYS DPCZ2S10	NG10 Dual pilot check valve	

## Throttle Check Valves



Part number	Description	Retail price R
HYS DTCZ2FS6-30	NG6 Dual throttle check valve	
HYS DTCZ2FS10-30	NG10 Dual throttle check valve	



## Notes